

**CONGRESS SQUARE**  
PORTLAND, ME

CITY OF PORTLAND, MAINE

LANDSCAPE ARCHITECT



**WALLACE ROBERTS & TODD, LLC**  
1700 MARKET STREET, SUITE 2800

215.732.5215  
WRTDESIGN.COM

CONSULTANTS

CIVIL ENGINEERING  
**SEBAGO TECHNICS**  
75 JOHN ROBERTS RD, SUITE 1A  
SOUTH PORTLAND ME, 04106  
207.200.2100

MEP ENGINEER AND STREET LIGHTING  
**BENNET ENGINEERING**  
7 BENNET RD, P.O. BOX 297  
FREEPORT, ME 04032  
207.865.9475

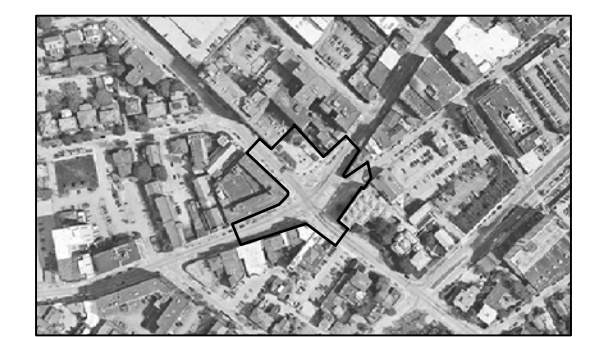
URBAN HORTICULTURE  
**PATRICK CULLINA**  
894 6TH AVE, 5TH FLOOR  
NEW YORK, NY 10001  
718.288.8661

SITE LIGHTING  
**TILLETT LIGHTING**  
15 MAIDEN LN, SUITE 508  
NEW YORK, NY 10038  
211.766.0144

WATER FEATURE DESIGN  
**DELTA FOUNTAINS**  
11494 COLUMBIA PARK DR. W., SUITE 4  
JACKSONVILLE, FL 32258  
904.886.9030

COST ESTIMATING  
**VJ ASSOCIATES**  
35 HIGHLAND CIRCLE, SUITE 2800  
NEEDHAM, ME 02949  
781.444.8200

KEY PLAN



ISSUE

REV #	DATE	DESCRIPTION
1	03/12/18	50% DESIGN DEVELOPMENT

SEALS

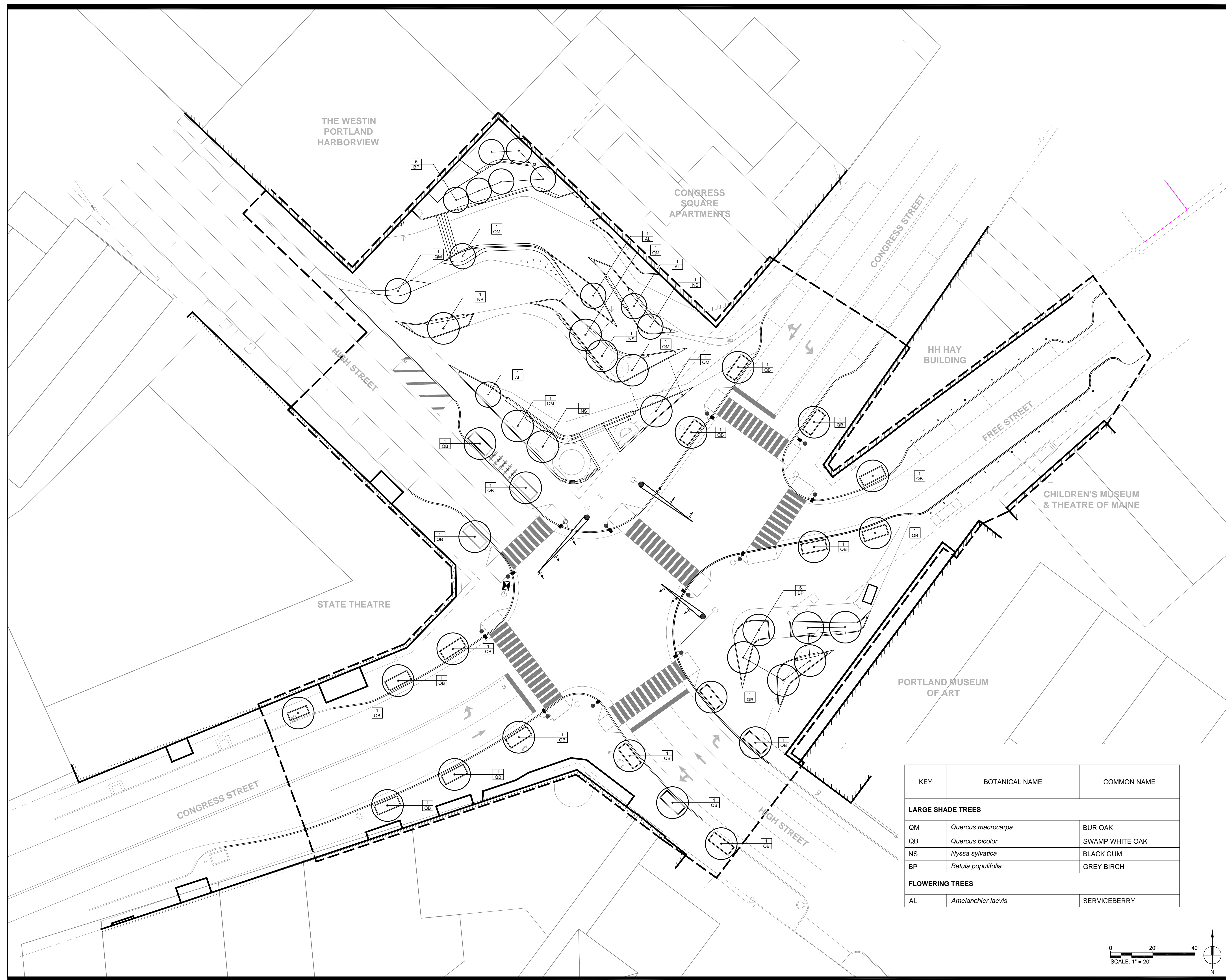
**50% DESIGN DEVELOPMENT - NOT FOR CONSTRUCTION**

COPYRIGHT © 2018 - Wallace Roberts & Todd, LLC - ALL RIGHTS RESERVED - All ideas, designs, arrangements and plans indicated or represented by this drawing and written material appearing herein constitute the original and unpublished work of Wallace Roberts & Todd, LLC and the same may not be duplicated, used or disclosed to any person, firm or corporation for any purpose whatsoever without the written consent of the architect.

JOB # \_\_\_\_\_ DRAWN BY \_\_\_\_\_  
DATE \_\_\_\_\_ CHECKED BY \_\_\_\_\_  
SCALE AS NOTED

DRAWING TITLE  
**PLANTING PLAN**

DRAWING #  
**L-104**



KEY	BOTANICAL NAME	COMMON NAME
<b>LARGE SHADE TREES</b>		
QM	<i>Quercus macrocarpa</i>	BUR OAK
QB	<i>Quercus bicolor</i>	SWAMP WHITE OAK
NS	<i>Nyssa sylvatica</i>	BLACK GUM
BP	<i>Betula populifolia</i>	GREY BIRCH
<b>FLOWERING TREES</b>		
AL	<i>Amelanchier laevis</i>	SERVICEBERRY

